

## Woodlands Crossing

12622 Hickman Road, Clive, IA

Woodlands Crossing offering retail and office opportunities along business Hickman Road in Clive, IA. Class A Mid-Rise office designs offer significant glass with wooded views and underground garage parking.

**Heath D. Bullock, CCIM, SIOR**  
**Senior Vice President**  
+1 515 554 7412  
[Heath.bullock@am.jll.com](mailto:Heath.bullock@am.jll.com)



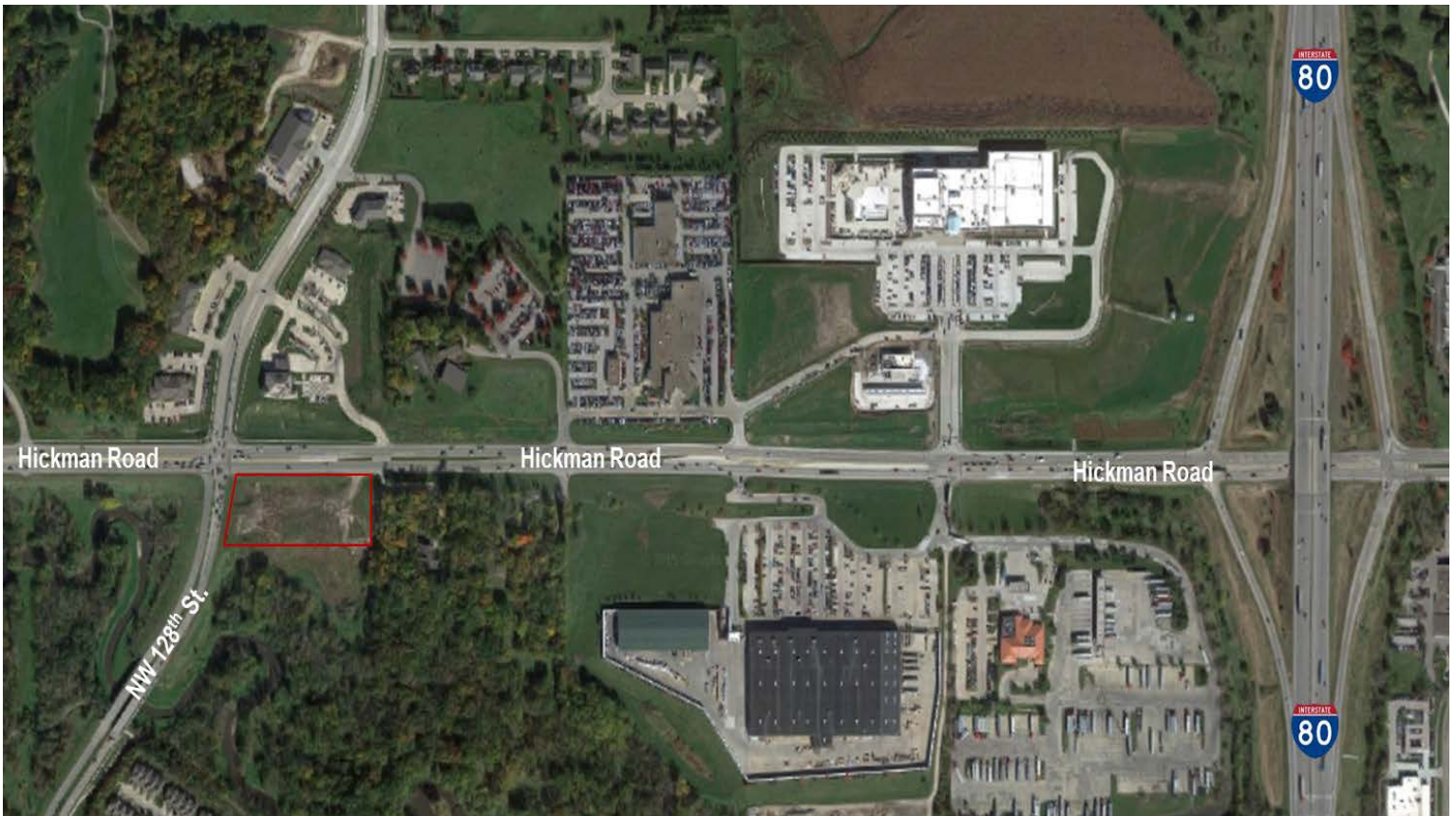
## Offerings:

## Land Sites:

- \$16.50 psf for one and two acre sites

## Amenities:

- BTS - Negotiable office and retail new construction
- Prominent signage options
- Location with high traffic and high demographic stats



Heath D. Bullock, CCIM, SIOR  
Senior Vice President  
+1 515 554 7412  
Heath.bullock@am.jll.com

